

THESE DRAWINGS ARE THE INTELLECTUAL PROPERTY OF IMBUE DESIGN, LLC. ALL RIGHTS ARE RESERVED. NO PART OF THESE DRAWINGS MAY BE REPRODUCED OR USED FOR ANY PURPOSE WITHOUT THE EXPLICIT WRITTEN CONSENT OF IMBUE DESIGN, LLC.

imbue
N3

801.477.4174
949 Denver Street
SLC, Utah 84111

Ridge Nest 14
Eden, Utah 84310

design ciprian's retreat



N3 DESIGN FEATURES

TREE HOUSE : Perched and elevated above the land, the floor plane is placed at a height similar to nearby tree tops. The 'fun size' is reminiscent of a tree house...more of an adult retreat with efficiently planned living spaces.

VIEWS : Floor to ceiling windows are incorporated in every space to capture the spectacular views that brought you to Powder Mountain. From the living room, direct north-east vistas. In the bedroom, a protected view to the ski resort. From the shower, a private and intimate connection to the trees. Reclined in the loft, a star gazing operable roof top sky light.

CANTILEVER : Extending off a concrete base, which holds utility function, the cabin reaches beyond the foundation walls to float above the land and piling winter snow.

FUNCTION : Simple and minimal. One bed, one bath, one loft for guests, and one kitchen-dining-living space. No need to max out the building footprint when you can have the sweetest living pad on 'the block'.

MODULAR : Three sections define the cabin, one for each function, which can be pre-fabricated and remotely built, so construction can commence during the unbuildable months of the year. Once weather permits, the sections can be easily hoisted onto the foundation, increasing the pace at which construction can occur.

DECK : As an extension of the living space, the deck cantilevers beyond the home structure, high into the tree tops toward the north-east view. Partially covered and partially exposed, the deck creates a fantastic place to enjoy a whiskey on the rocks.

MATERIALS : Rich and dark, a real-wood panelized product sheaths the exterior of the retreat in a maintenance free material. Bringing those deep tones into the home, dark stained cedar reach inward from the deck, providing a warm and authentic material for the interior.

INSULATE : Thermal protection for the house is provided with continuous exterior insulation, and thickened floor, wall and ceiling planes. This allows a densely packed and tightly sealed building envelope, with super-insulation to keep the structure efficient and effective in heating/cooling.

WOOD FIREPLACE : Modern aesthetic with the classic feel of a wood burning fireplace will help set the mood whether in the depths of winter, or those crisp fall mornings.

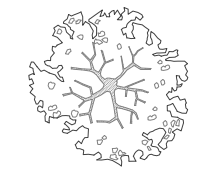
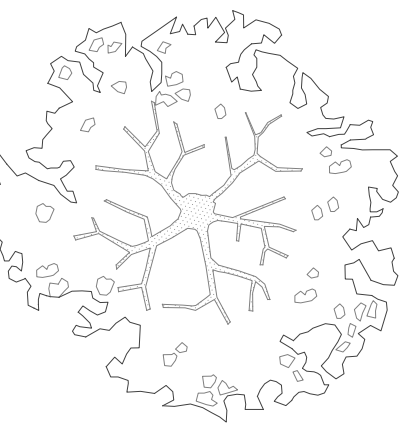
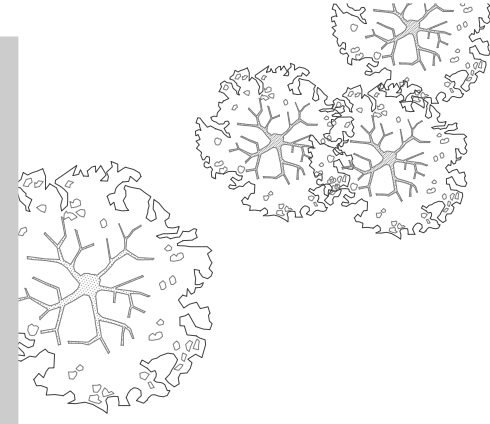


THESE PLANS ARE THE INTELLECTUAL PROPERTY OF IMBOUE DESIGN, LLC AND ARE PROTECTED BY COMMON LAW, STATUTORY AND OTHER RESERVED RIGHTS INCLUDING, BUT NOT LIMITED TO, COPYRIGHT. THESE DRAWINGS MAY NOT BE REPRODUCED OR USED FOR ANY PURPOSE WITHOUT THE EXPLICIT WRITTEN CONSENT OF IMBOUE DESIGN, LLC.

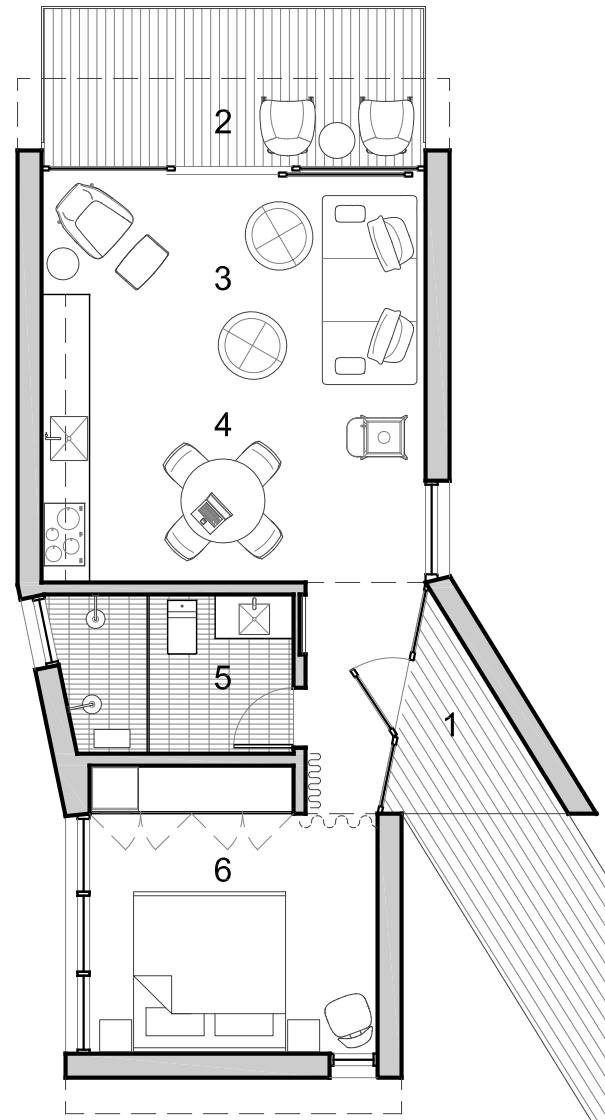
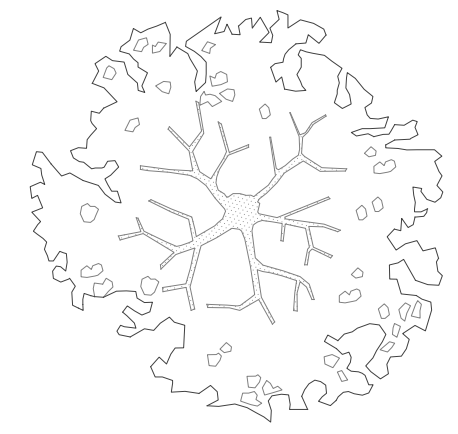
imboue design

801.477.4174
949 Denver Street
SLC, Utah 84111

Ridge Nest 14
Eden, Utah 84310
ciprian's retreat

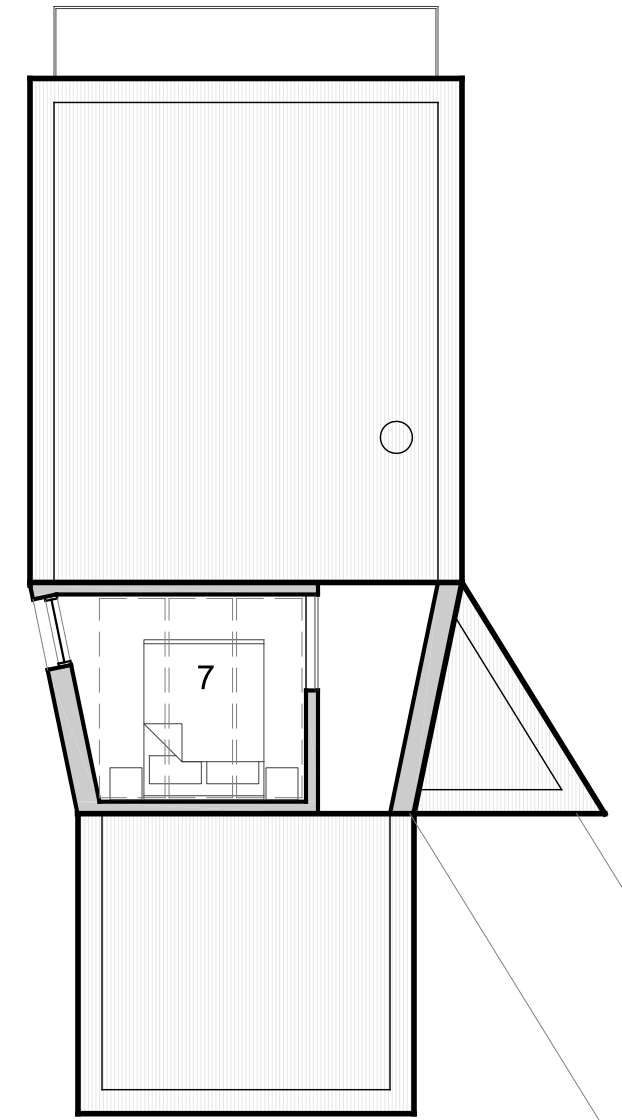


N3



A Floor Plan
SCALE 1/8" = 1'-0"
635 SQ FT
750 SQ FT

- 1 Entry
- 2 Deck
- 3 Living
- 4 Kitchen / Dining
- 5 Bathroom
- 6 Bedroom
- 7 Loft



B Loft Plan
SCALE 1/8" = 1'-0"
115 SQ FT
750 SQ FT